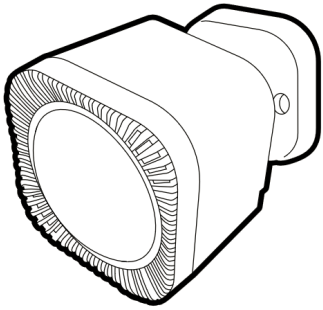


# MultiSensor 7 user guide

Modified on: Mon, 26 Apr, 2021 at 6:57 PM



Aeotec MultiSensor 7 was developed to detect ambient values and movement and to transmit them with [Z-Wave Plus](http://aeotec.com/https://aeotec.com/z-wave-home-automation/z-wave-gen7.html) (<http://aeotec.com/https://aeotec.com/z-wave-home-automation/z-wave-gen7.html>) technology. You can find out more about [MultiSensor 7](https://aeotec.com) (<https://aeotec.com>)

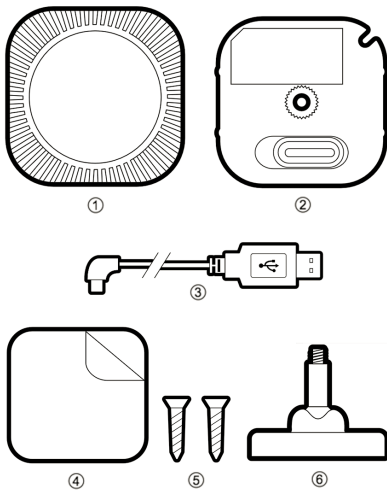
To see whether MultiSensor 7 is known to be compatible with your Z-Wave system or not, please reference our [Z-Wave gateway.com](https://help.aeotec.com/a/solutions/articles/6000246153) technical [specifications of MultiSensor 7](https://help.aeotec.com/a/solutions/articles/6000246153) (<https://help.aeotec.com/a/solutions/articles/6000246153>) can be viewed at that link.

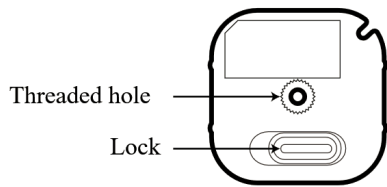
## Get to Know your MultiSensor.

Your MultiSensor comes packaged with a number of accessories that will help with its installation and operation.

### Package Contents:

1. MultiSensor
2. Battery Cover
3. USB Cable
4. Double-Sided Tape
5. Screws (×2)
6. Back Arm Mount



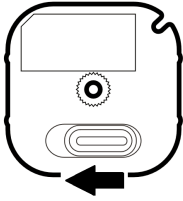


### Button Functions.

Action button press	LED Status	Function
1x Tap (when factory reset)	Solid <b>Yellow</b>	<b>Pair Mode</b> Enters Z-Wave pair mode, flashes white/green 4 1
1x Tap (when already paired)	Solid <b>Purple</b>	<b>Sends NIF / Excludes device</b> if Z-Wave controller is in unpair mode, starts <b>blue</b> reset successfully.
Press and hold [1, 2 seconds)	No LED	N/A
Press and hold [2, 5 seconds)	Solid <b>Red</b>	<b>Quick Wakeup</b> LED will disappear as soon as you release its but wakeup report to your Z-Wave Controller to take i waiting in your controller.
Press and hold [5, 9 seconds)	Solid <b>Orange</b>	<b>Long Wakeup Mode</b> LED will remain solid <b>Orange</b> upon release of its l told to sleep by user or z-wave controller). This wi device while the sensor is used with battery powe does not queue the command.
Press and hold [9, 15 seconds)	Solid <b>Cyan</b>	<b>Communication Health Test</b> (Direct gateway co repeaters).  This will test your MultiSensor 7 direct communic remain <b>Cyan</b> while it is testing.  Once finished it will become a solid color for 2 ser indicate health:  <b>Red</b> = Bad health, can't communicate at all. <b>Yellow</b> = Moderate health, could use improvemen <b>Green</b> = Great health
Press and hold [15, 20 seconds)	Blinking <b>Red</b>	Release here to cancel Factory Reset.
Press and hold [20+ seconds)	<b>Blue</b> fade in/out for 2 seconds.	Factory Reset.

### Important safety information.

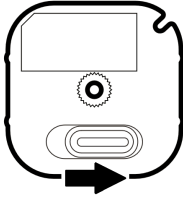
1. Remove the battery cover by sliding the Unlock button LEFT, then pull the cover off.



2. Insert the microUSB of the provided USB cable into your sensor's microUSB port.

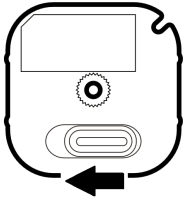
3. Insert the larger end of the USB cable into a computer or any 5V adapter which will immediately power your MultiSensor 7

4. Make sure to seat the Battery Cover back onto the MultiSensor 7 and lock it in by sliding the Unlock button RIGHT.

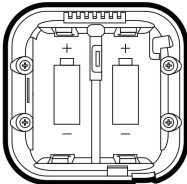


**For a battery powered installation (acts as a sleeping device upon initial pair):**

1. Remove the battery cover by sliding the Unlock button LEFT, then pull the cover off.

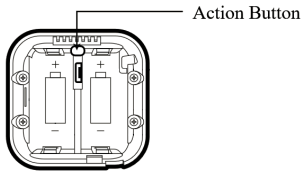


2. Insert two CR123A lithium batteries orientated according to the diagram within your sensor.  
Try inserting the batteries flat rather than at an angle.



**Note:** MultiSensor 7 can be powered by a single CR123A (doesn't matter which port), though batteries will require chang  
**WARNING:** Not compatible to rechargeable CR123A batteries (3.6V).

3. Make sure to seat the Battery Cover back onto the MultiSensor 7 and lock it in by sliding the Unlock button RIGHT



3. It will be solid yellow during inclusion, and flash white/green 3 times if paired successfully. If it fails, it will flash white/red in

## Advanced Functions.

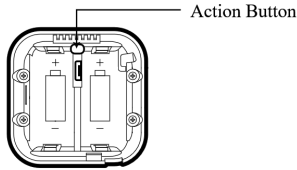
### Z-Wave Resetting MultiSensor 7.

Your MultiSensor can be removed from your Z-Wave network at any time. You'll need to use your Z-Wave network's main controller for this. If you are using other products as your main Z-Wave controller, please refer to the part of their respective manuals that tells you

#### Using an existing gateway:

You may need to refer to your gateway's method of including devices if you do not know how to pair a Z-Wave device. You may MultiSensor 7 even if they are not paired together to factory reset MultiSensor 7.

1. Set your Z-Wave gateway into Z-Wave unpair (exclusion) mode.
2. Tap the action button once; the purple led will light up.

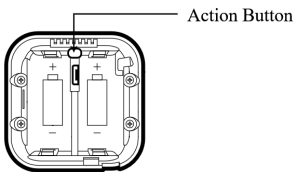


3. If removed successful, the blue led will fade in and out to indicate it is ready to be paired to a new hub.

### Manual Hard Resetting MultiSensor 7.

This method is not fully advised unless your gateway has failed, if paired to your network, performing these steps will factory reset y phantom/ghost device in your working Z-Wave network.

1. Make sure the device has been powered.
2. Press and hold the button for 20 seconds. When the red led flash, the device will enter factory reset mode.



1. Press and hold Multisensor 7 Action button
2. Wait until the LED turns into a solid orange color (2 - 5 seconds)
3. Release Multisensor 7 Action Button, the LED should remain solid orange while it is awake. Send any configurations from
  - If the MultiSensor 7 LED orange LED turns off right away, this would indicate that your hub is putting your device to sleep. Tap the Action Button on Multisensor 7 to put Multisensor 7 back to sleep, or wait 5 minutes. (recommended to manually power up your hub again, then power up your hub again.
4. Tap the Action Button on Multisensor 7 to put Multisensor 7 back to sleep, or wait 5 minutes. (recommended to manually power up your hub again, then power up your hub again.

### **Advanced settings of MultiSensor 7.**

There are further advanced parameter settings and group association settings not listed in this guide. You can find the attachment which will give you all possible functions of the MultiSensor 7 that may be missing in this guide.

The PDF guide will feature these missing advanced settings:

- Parameter settings (Configuration Command Class)
- Group Association (Association Command Class)

You may download the engineering sheet below: